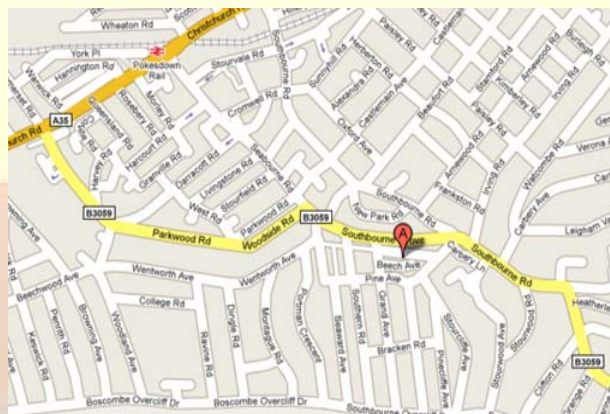
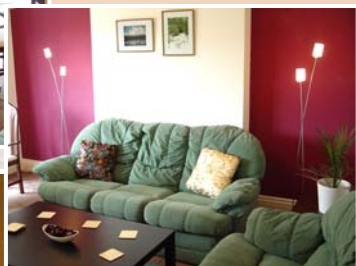


## Prices

Prices are for the complete flat accommodating 5 to 6 people. Children are very welcome, but we can't allow smoking or pets in the flat.



*You holiday accommodation is here*  
10 Beech Avenue  
Bournemouth  
BH6 3ST

*We recommend you secure your holiday accommodation with us as early as possible to avoid disappointment, although we may have some free spaces on a short notice.*

*We are happy to answer further questions about the area, the flat or how to get here, or if you want to recommend us further.*

**Email:** sstarke@talk21.com  
**Phone:** +44 (0) 1202 417332  
**Mobile:** +44 (0) 7710 426868

Prices are to local tariffs and include:

- Rent of the **complete flat** for up to 6 people
- Bed linen and towels for each person
- Off-road parking, use of garden, WIFI access
- Utility bills, TV licence, Council Tax, etc.

March/April/Mid May	£490 p.w.
Mid May/June	£575 p.w.
July/August	£720 p.w.
September/October	£625 p.w.

*Please book July/Aug min. 6 weeks in advance*  
**Deposit:** *one third of the total amount payable in confirmation of your booking*

**Please book with Sylva or Steve**  
**Email:** sstarke@talk21.com  
**Phone:** +44 (0) 1202 417332  
**Mobile:** +44 (0) 7710 426868



# Holiday Flat



## i Southbourne

Close to beach, shops & transport  
In quiet cul-de-sac

**Sylva & Steve**  
**10A Beech Avenue**  
**Bournemouth**  
**BH6 3ST**

Sandy beaches, Jurassic Coast,  
New Forest, Dorset green hills,  
cultural heritage, sport activities...

## About the Flat

Our flat is a self-contained, 3 bedroom, first floor flat for up to 6 people with parking garden and WIFI.



Bedroom 1: 2x3' beds & en-suit shower room;  
Bedroom 2: 2x3' beds with washing basin;  
Bedroom 3: 1x3' bed with additional pullout guest bed for a sixth person;  
Bathroom: with bath tub and shower facility;  
Living/Dining room: with digital TV, DVD player;  
Kitchen: fully furnished, all modern facilities (ceramic cooker, electric oven, fridge/freezer, washing machine, dishwasher, microwave, toaster, kettle, coffee machine, pots, pans, ...



Garden: grass & seating area, BBQ, washing ainer  
Beach: 5 mins walk  
Local shops & buses: around the corner  
Local train station: 15 mins walk to Pokesdown

## About the Area

Located in one of the most famous and beautiful holiday resorts in Great Britain, **Bournemouth** is famous for its sandy beaches and has won a lot of awards for its beautiful beaches and gardens.



The wealth of places of interest, activities and entertainment that the surroundings offer will impress you. For example, there is Christchurch and the Priory church, Corfe Castle and the steam railway, Salisbury and its Cathedral, Stonehenge, the New Forest National Park, the Jurassic Coast World Heritage Site, Poole Quay & Harbour, Sandbanks, the Boscombe surf reef, many manor houses and parks such as Kingston Lacy, Upton House, Lulworth Castle, there are animal and botanic gardens, plenty of golf courses, markets, shops, restaurants, theatres, pubs, clubs and so much more nature, sport, leisure, entertainment and nightlife.

Most places can be easily reached by bus or train, and there are good local transport connections, if you want to leave your car.

Southbourne lies at the coast line of Bournemouth Bay and borders to the busy town centre of Bournemouth and Poole Harbour to one side, and to Christchurch and the New Forest to the other side.

Southbourne is ideal for people keen to escape the busier areas of the town centre. Our holiday flat is embedded between the local shopping/ high street and the award winning sandy beaches – all just 5 minutes walk away!

The high street, Southbourne Grove, offers some individual shops rather than high street chains, gift shops, butchers, bakeries, cafes, take-aways, restaurants, convenience stores, hairdressers, banks, post office, pharmacy,...



Fisherman's Walk and Lift (between the cliff top and the beach promenade) allows easy access to the sea and a leisurely walk to Boscombe and Bournemouth. The local Seaford Gardens and Shelly Park offer bowls and tennis facilities, the new surf reef is nearby at Boscombe Pier.

***We are happy to help with planning your holiday and can provide more information about sightseeing or holiday activities.***